

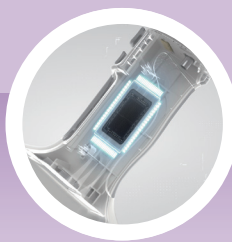
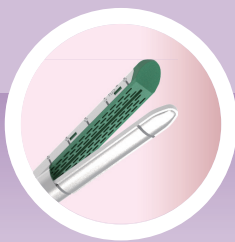
Power Your Surgery

IntoCare™ Powered Endoscopic Linear Cutting Stapler

An ergonomic, smart, intuitive and intelligent linear cutting stapler with E-stapling technology



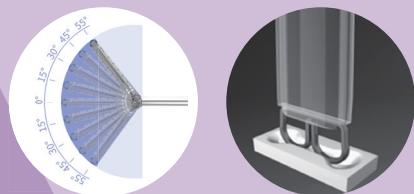
Program Control
Optimized Structural Design
Power-driven Unified Operation



- Power driven system contributes to great outcomes with minimal effort
- Intelligent Program Control guarantees safer surgery
- Optimized Structure boosts confidence in anastomosis
- Standardized Platform offers an ergonomic, intuitive, and economic solution

IntoCare™ Powered Endoscopic Linear Cutting Stapler

OPTIMAL STRUCTURAL DESIGN



55 DEGREE ANGULATION: allows easy access to challenging sites

STRENGTHENED CARTRIDGE HOUSING : assures consistent staple line integrity throughout the distal, middle and proximal areas of the cartridge

8-SHAPE STAPLE POCKETS: offers more area to guide staple formation

POWERED OPERATION



MINIMAL FIRING FORCE: 95% less than manual staplers to reduce operator fatigue

MINIMAL DISTAL MOVEMENT: 62% less than manual staplers to enhance staple line integrity

MINIMAL USER DIFFERENCE: reduce user difference to achieve consistent outcomes



INTELLIGENT PROGRAM CONTROL

REDUCE MENTAL STRESS

- Self check
- Self identification
- Self control
- Self feedback



VERSATILE SELECTION



3 sizes of DLU, 5 colors of DLU, 3 sizes of shafts to accommodate different tissue thickness